

Title	User Guide - Fix IE 9.0 Issue For Xplor
Version No	1.0
Modified On	08-Aug-2013
Author Name Company/Dept.	Rajesh Kumar Verma Information Technology, Kuoni DM, Gurgaon, India

Copyright Notice

This document contains proprietary information of KUONI Destination Management. No part of this document may be reproduced, stored, copied, or transmitted in any form or by means of electronic, mechanical, photocopying or otherwise, without the express consent of KUONI Destination Management. This document is intended for usage in particular project and should not be used for any external purpose.

Revision History

Version No	Date	Prepared by / Modified by	Significant Changes
1.0	08-Aug-2013	Rajesh Kumar Verma	Initial

Glossary

Abbreviation	Description
IT	Information Technology
IE	Internet Explorer

Table of Contents

1	Introduction	4
1.1	Purpose	4
1.2	Scope.....	4
1.3	Intended Audience.....	4
2	Compatibility Fix in IE 9.0	4
3	Appendix	5

1 Introduction

1.1 Purpose

The purpose of this document is to describe on step by step actions that needs to be done in Internet Explorer (IE) 9.0 after IE9.0 upgrade project.

1.2 Scope

The scope of this document is to cover the steps that needs to be performed by users who are accessing Xplor application using internet explorer.

1.3 Intended Audience

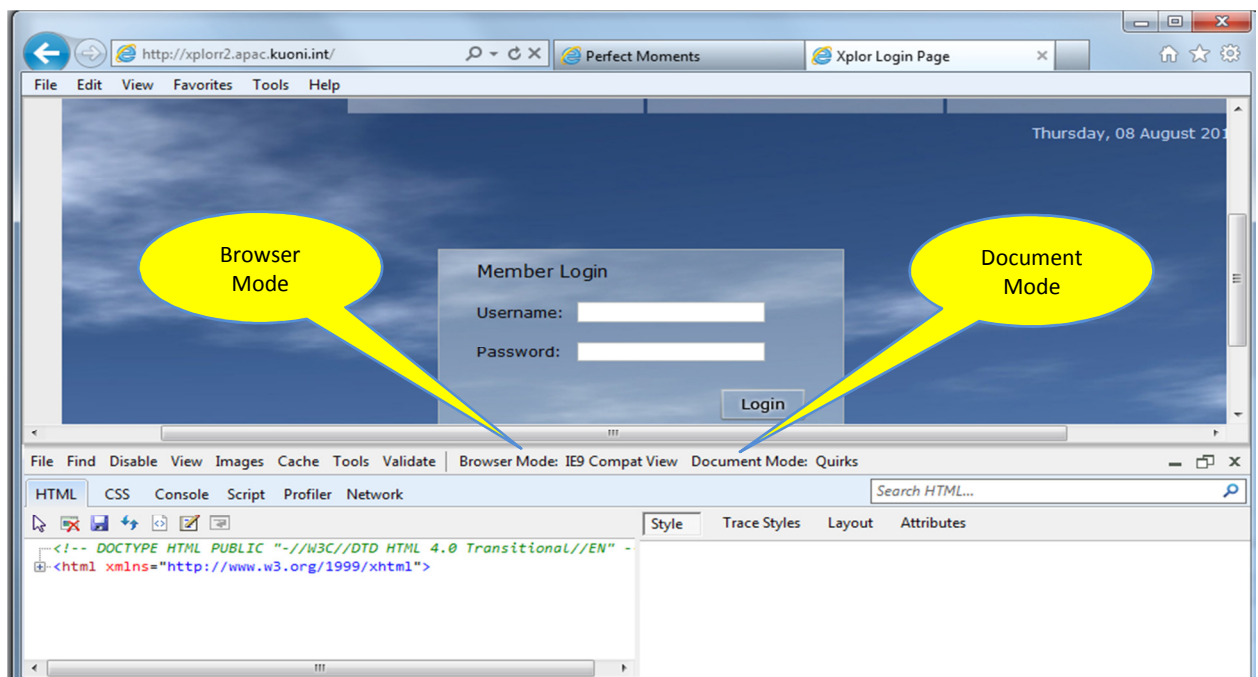
Main audience includes,

1. KUONI IT Team,
2. Xplor Users

2 Compatibility Fix in IE 9.0

After the IE upgrade to version 9.0, user may experience some issue in Xplor accessibility and look & feel. In order to access Xplor application on IE9.0, please perform these steps before / after opening Xplor application

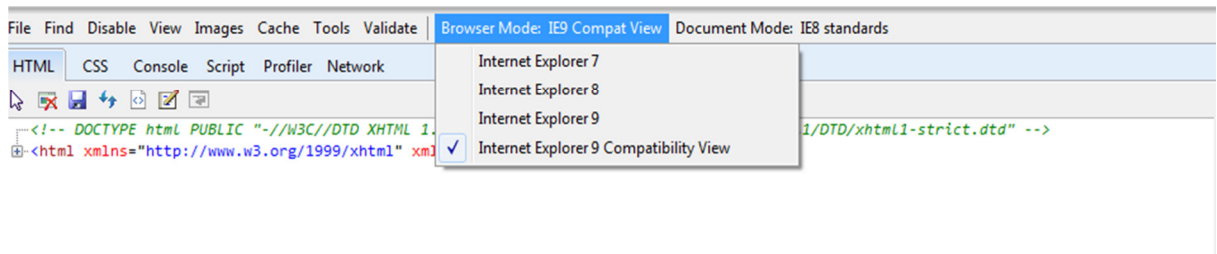
1. Open the URL of Xplor application
2. Press F12 button on keyboard connected with your computer or laptop, user will get this view,



- Click on Document Mode, and select option "Internet Explorer 7 standards" or "Internet Explorer 8 standards" (as shown in screen shot below)



- Now click on Browser Mode, and select option "Internet Explorer 9 Compatibility View" (as shown in screen shot below)



- Now Press key F5, and now you can start working as you were accessing Xplor in past.

3 Appendix